



T°SHOOTER® TS1000



T°SHOOTER®
THERMAL CONTOUR CAMERA



SPECIFICATIONS TS1000 (PATENT PENDING)

Thermal camera	FLIR LEPTON 3.5 160x120 pixels, range of -10°C to 400°C
Color palettes	Iron-Rainbow-B&W
Working modes	Contour-Isotherm-Standard
Emissivity setting	From 0.01 to 1
Visible camera	5 MP
Display	LCD VGA color 5.7 640 x 480 pixels
Pictures	VGA JPEG, number, name, date and time
Measurements	T°C or T°F
Memory	Up to 500 pictures, can be uploaded to PC
Communication	USB cable supplied
Autonomy	4 hours
Power supply	Rechargeable Nickel-metal hybrid batteries (NiMH)
Power charger	Universal DC 12V-1.5A
Temperature use range	-10°C to +50°C
Dimensions	H : 310 mm - W : 165 mm - D : 65 mm
Weight	700 gr for the TS1000 3,2 kg including ABS case
CE Standards	CEM 2004/108/CE : EN61000-6-4 & EN61000-6-2



SYNERGYS
TECHNOLOGIES

T'SHOOTER[®] a SYNERGYS
TECHNOLOGIES innovation

Quartier Plessier - 39, avenue du 8^e Régiment de Hussards
BP 30109 - 68132 ALTKIRCH CEDEX - FRANCE
Tél. +33 (0)3 89 08 32 72 / Fax +33 (0)3 89 08 32 73
info@synergys-technologies.com
www.synergys-technologies.com



Distributed by :

Hilger u. Kern
Industrietechnik

Hilger u. Kern GmbH • Käfertaler Str. 253
68167 Mannheim • DEUTSCHLAND
Tel.: 0621/3705-0 • Fax: 0621/3705-200
Home: www.hilger-kern.com

T°SHOOTER® TS1000

Thermal contour camera for the detection of abnormally hot or cold temperature zones.

NEW CONCEPT. Easier than an infrared thermal imaging camera. No more interpretation. Defective zones appear immediately on a visible scene.

One of the best indicator for maintenance, quality and security is the temperature T°.

By preventatively measuring and detecting your abnormally machine, process, electrical installation temperatures, you will improve your equipment reliability and your maintenance performance.

Easily capture, analyze and photograph your precise thermal problem locations using the T°SHOOTER® TS1000 (patent pending).

Adjust your temperature reference parameter ($> T^{\circ}\text{max}$ or $< T^{\circ}\text{min}$) and scan your equipment. The new thermal contour camera T°SHOOTER® TS1000 will show you immediately up to 6 abnormal temperature zones on a visible scene (on a large colored VGA 5.7" LCD screen!).

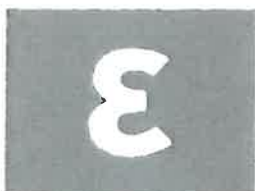
Easy to use, no special analysis in the thermal infrared image to do, no manual cursor to move or to place. It is not a standard thermal imaging camera, it is more easy to use and comfortable. The T°SHOOTER® TS1000 is a new concept (patent pending) which shows the abnormal thermal contours in the visible scene to the user.

Switching from visible to thermal imaging (3x color palettes) is still possible with keyboard button.

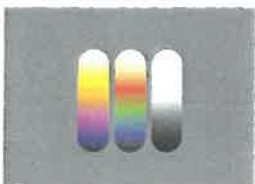
Made for all users. Made for faster checks. Made for more pleasant and efficiency use.

FOR EACH CONTOURED ZONE, YOU CAN SEE T°MAX VALUE AND POSITION AND T°AVERAGE VALUE.

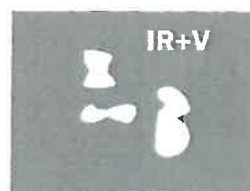
3X THERMAL WORKING MODES :



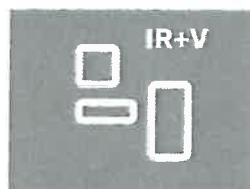
**ADJUSTABLE
EMISSIVITY
FROM 0.01 TO 1**



**3X THERMAL
COLOR PALETTES :**
• IRON
• RAINBOW
• B&W



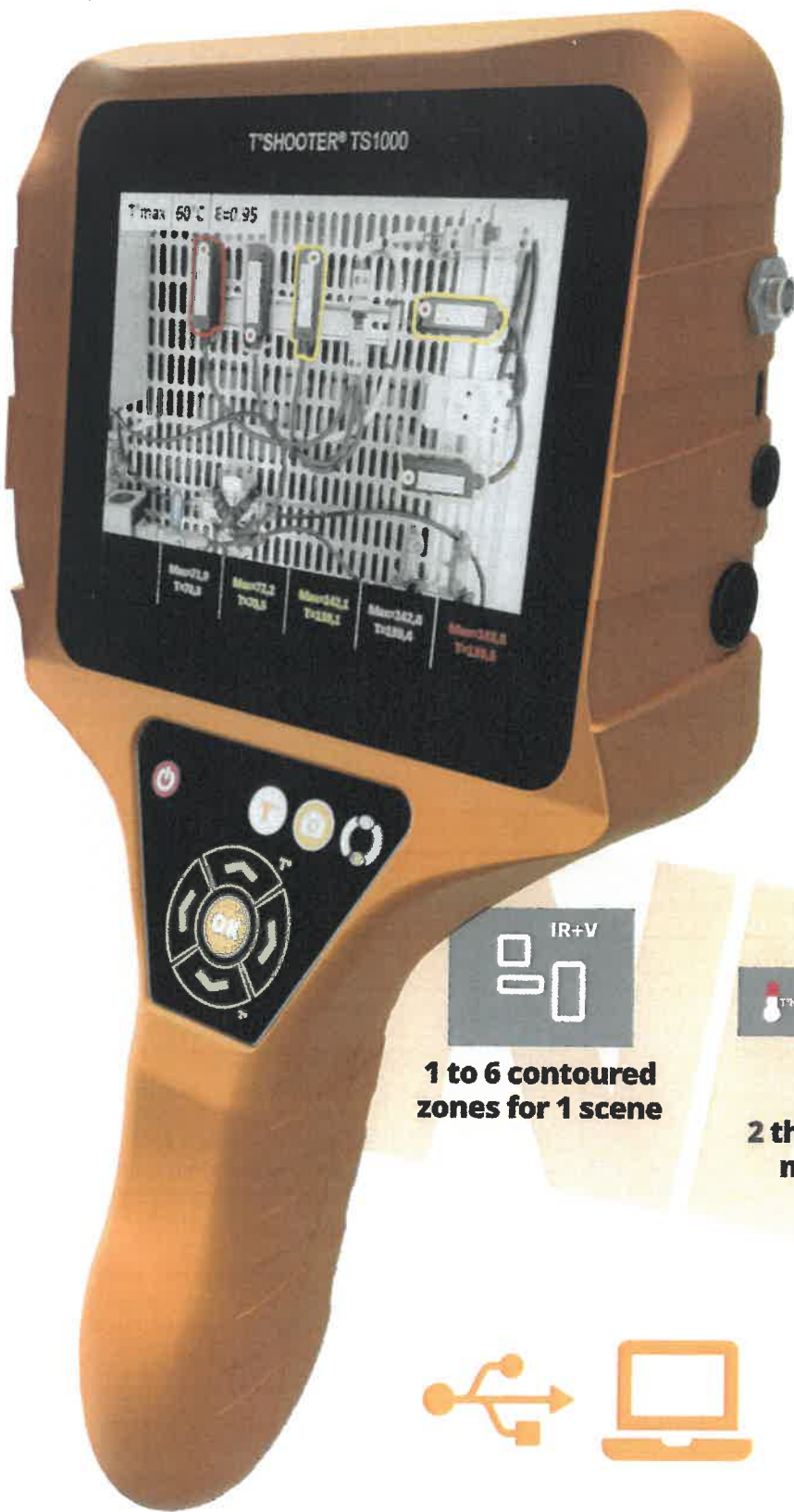
• ISOTHERM



• WITH CONTOUR



• STANDARD



**2 SENSORS
TECHNOLOGY:
VISIBLE +
THERMAL**



**1 to 6 contoured
zones for 1 scene**



**2 threshold
modes**



**Built-in
vibrator**



ELECTRICAL

MECHANICAL

PROCESS

BUILDING

COOLING / BO

